


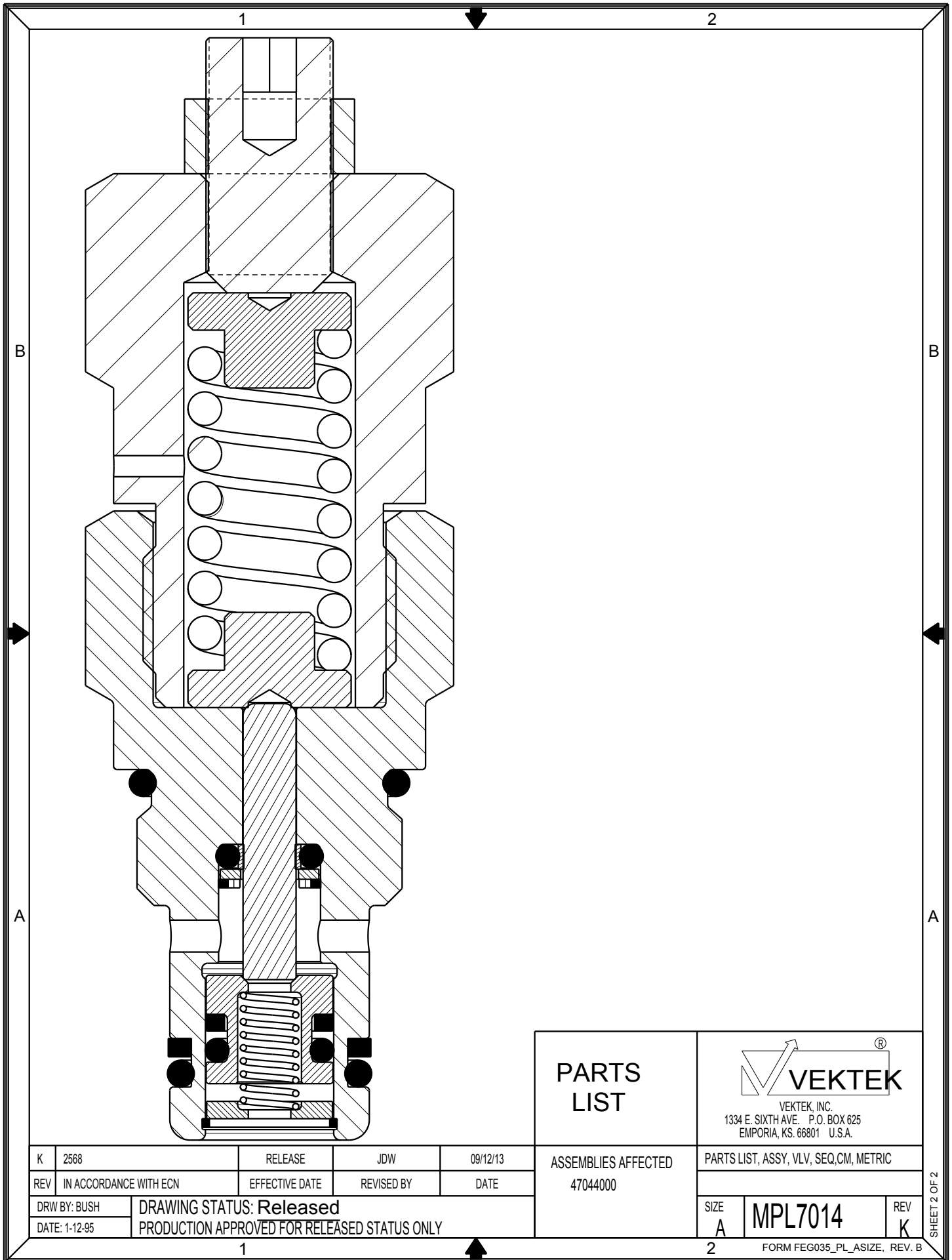
No.	QTY	PART No.	DESCRIPTION	STD. SEAL KIT	FKM SEAL KIT	SPRING KIT
1	1	21-4400-35	SET SCREW,FLAT POINT	NO	NO	NO
2	1	21-4200-19	HEX NUT	NO	NO	NO
3	1	87-0000-30	BODY,(NON-REPLACEMENT PART)	NO	NO	NO
4	2	87-0300-00	SPRING GUIDE	NO	NO	NO
5	1	23-3120-05	SPRING	NO	NO	YES
6	1	87-0500-00	GLAND,(NON-REPLACEMENT PART)	NO	NO	NO
7	1	87-0100-01	PLUNGER	NO	NO	NO
8	1	39-0100-63	ROD SEAL	YES	YES	NO
9	1	39-0000-09	O-RING (STANDARD)	YES	NO	NO
	1	39-0510-21	O-RING (FLUOROCARBON)	NO	YES	NO
10	1	21-4300-22	RETAINER	NO	NO	NO
11	1	23-0100-06	RETAINING RING	YES	YES	NO
12	1	87-0100-00	PISTON	NO	NO	NO
13	1	39-0100-61	BU RING	YES	YES	NO
14	1	39-0000-63	O-RING	YES	YES	NO
15	1	23-3100-14	SPRING	YES	YES	YES
16	1	87-0300-02	RETAINER	NO	NO	NO
17	1	23-0020-15	RETAINING RING	YES	YES	YES
18	1	39-0100-62	BU RING	YES	YES	NO
19	1	39-0000-65	O-RING (STANDARD)	YES	NO	NO
	1	39-V000-65	O-RING (FLUOROCARBON)	NO	YES	NO
20	1	39-0000-64	O-RING (STANDARD)	YES	NO	NO
	1	39-V000-64	O-RING (FLUOROCARBON)	NO	YES	NO
N/A	N/A	60-7040-00	SEAL KIT (STANDARD)	INCLUDED IN KIT		
N/A	N/A	6V-7040-00	SEAL KIT (FLUOROCARBON)			
N/A	N/A	61-7040-00	SPRING KIT			


NOTES:
1. LUBRICATE ALL SEALS BEFORE ASSEMBLY.

PARTS LIST	 VEKTEK <small>VEKTEK, INC. 1334 E. SIXTH AVE. P.O. BOX 625 EMPORIA, KS. 66801 U.S.A.</small>							
	<table border="1" style="width: 100%;"> <tr> <td>ASSEMBLIES AFFECTED</td> <td>PARTS LIST, VLV, SEQ, CM, METRIC</td> </tr> <tr> <td>47044000</td> <td></td> </tr> <tr> <td>SIZE A</td> <td>REV K</td> </tr> <tr> <td colspan="2" style="text-align: center;">MPL7014</td> </tr> </table>	ASSEMBLIES AFFECTED	PARTS LIST, VLV, SEQ, CM, METRIC	47044000		SIZE A	REV K	MPL7014
ASSEMBLIES AFFECTED	PARTS LIST, VLV, SEQ, CM, METRIC							
47044000								
SIZE A	REV K							
MPL7014								

K	2568	RELEASE	JDW	09/12/13
REV	IN ACCORDANCE WITH ECN	EFFECTIVE DATE	REVISED BY	DATE
DRW BY: BUSH	DRAWING STATUS: Released PRODUCTION APPROVED FOR RELEASED STATUS ONLY			
DATE: 1-12-95				

SHEET 1 OF 2



PARTS LIST	 VEKTEK, INC. 1334 E. SIXTH AVE. P.O. BOX 625 EMPORIA, KS. 66801 U.S.A.	
	ASSEMBLIES AFFECTED	PARTS LIST, ASSY, VLV, SEQ, CM, METRIC
47044000	SIZE A	REV K
DRAWING STATUS: Released PRODUCTION APPROVED FOR RELEASED STATUS ONLY		FORM FEG035_PL_ASIZE, REV. B

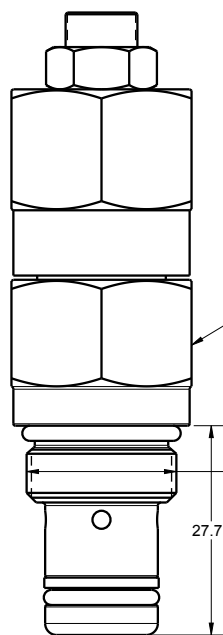
K	2568	RELEASE	JDW	09/12/13
REV	IN ACCORDANCE WITH ECN	EFFECTIVE DATE	REVISED BY	DATE
DRW BY:	BUSH	DRAWING STATUS: Released		
DATE:	1-12-95	PRODUCTION APPROVED FOR RELEASED STATUS ONLY		

SHEET 2 OF 2

1

2

NOTE:
FOR CAVITY TOOLING (MULTI-STEP REAMER AND M20 X 1.5 TAP), ORDER KIT 62-7040-00



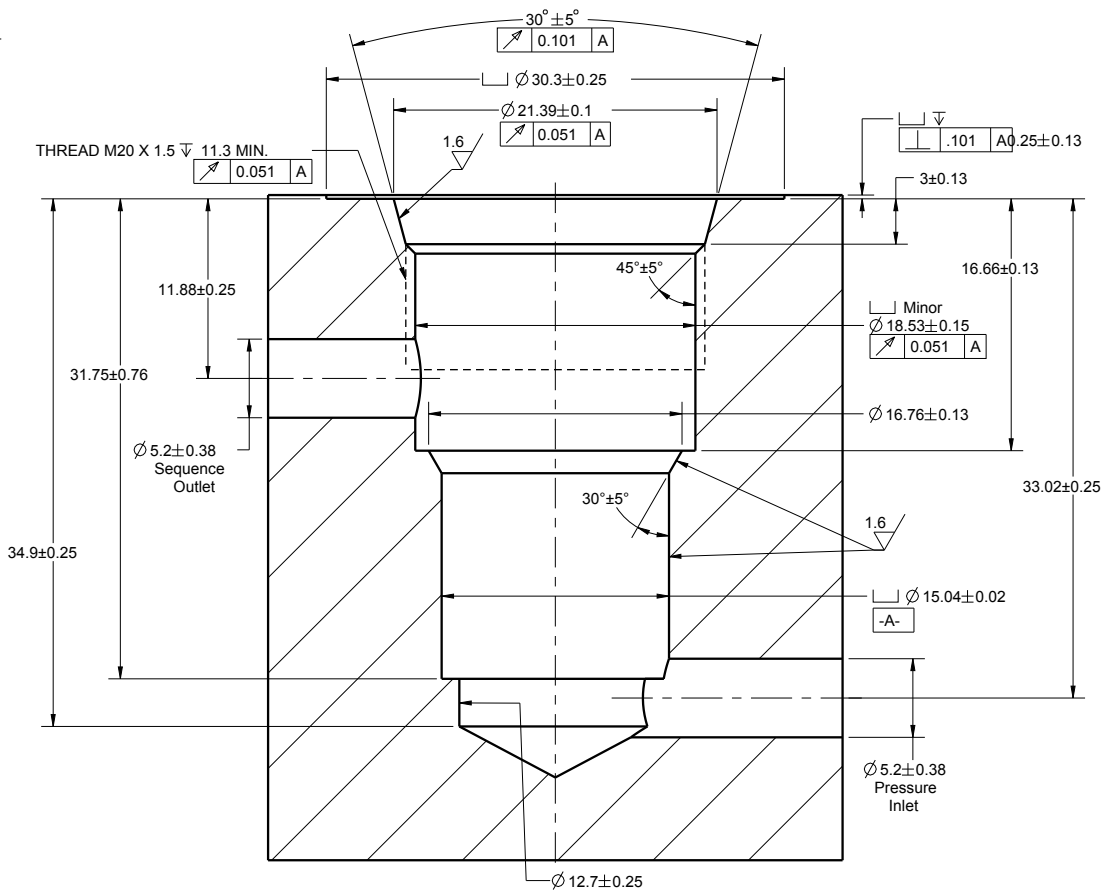
24 HEX TYPICAL
TORQUE TO 48 Nm
(35 FT-LB)

M20 x 1.5
THREADS

27.7

SEQUENCE VALVE
CARTRIDGE

SEQUENCE VALVE CARTRIDGE CAVITY DIMENSIONS FOR MACHINING WITH PORT TOOL



INSTALLATION INSTRUCTIONS



VEKTEK, INC.
1334 E. SIXTH AVE. P.O. BOX 625
EMPORIA, KS. 66801 U.S.A.

D	3337	RELEASE	JDW	12/13/17
REV	IN ACCORDANCE WITH ECN	EFFECTIVE DATE	REVISED BY	DATE
DRW BY: ROMINE	DRAWING STATUS: Released			
DATE: 03/23/07	PRODUCTION APPROVED FOR RELEASED STATUS ONLY			

ASSEMBLIES AFFECTED
47-0400-00
47-0400-01

VALVE, SEQUENCE, CAVITY, METRIC

SIZE
A IS7003

REV
D

1

2

FORM FEG041_IS_SIZE, REV. B

SHEET 1 OF 1